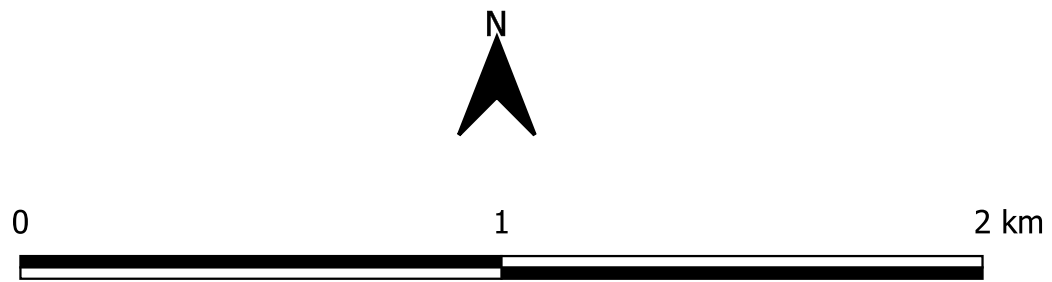
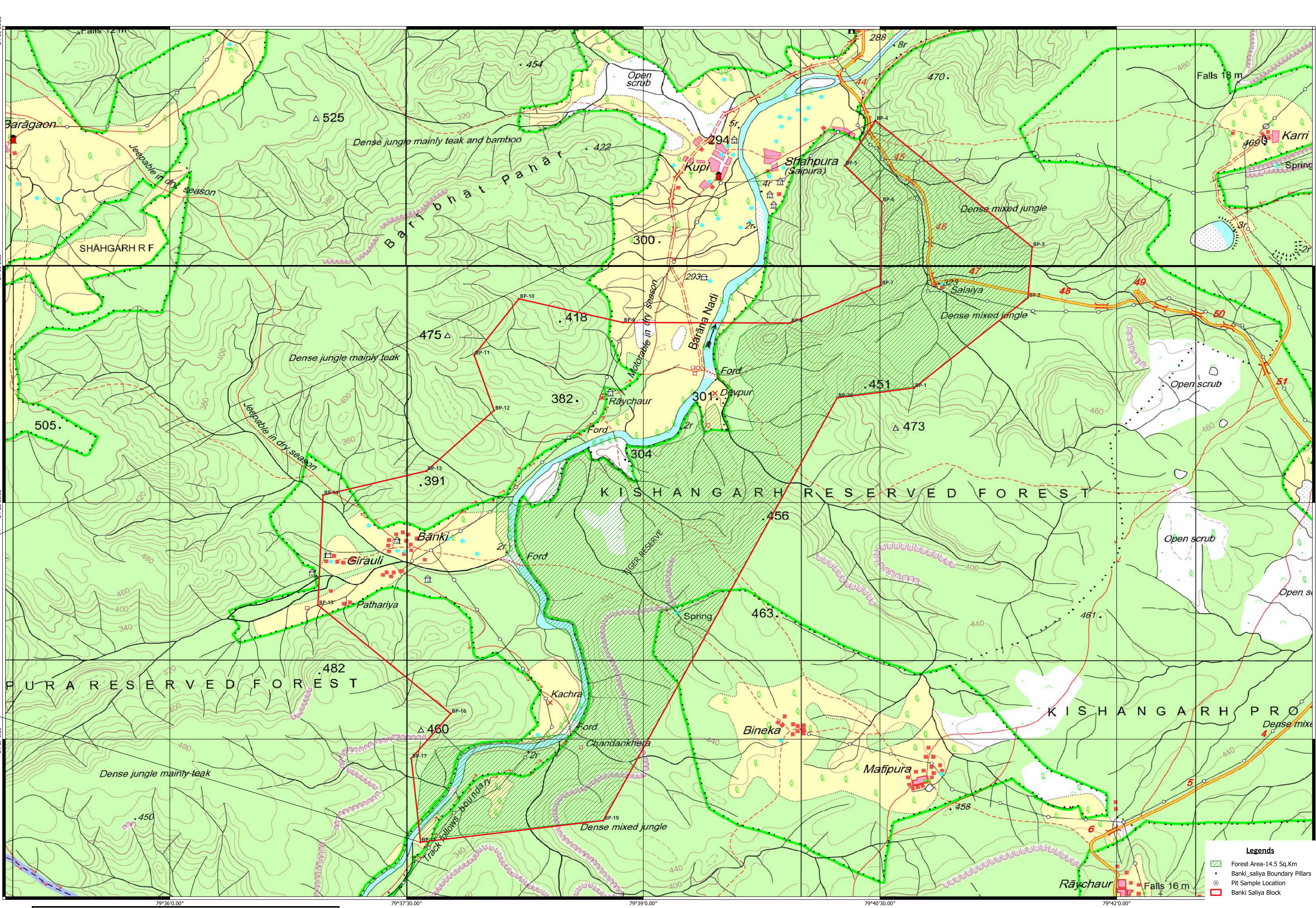
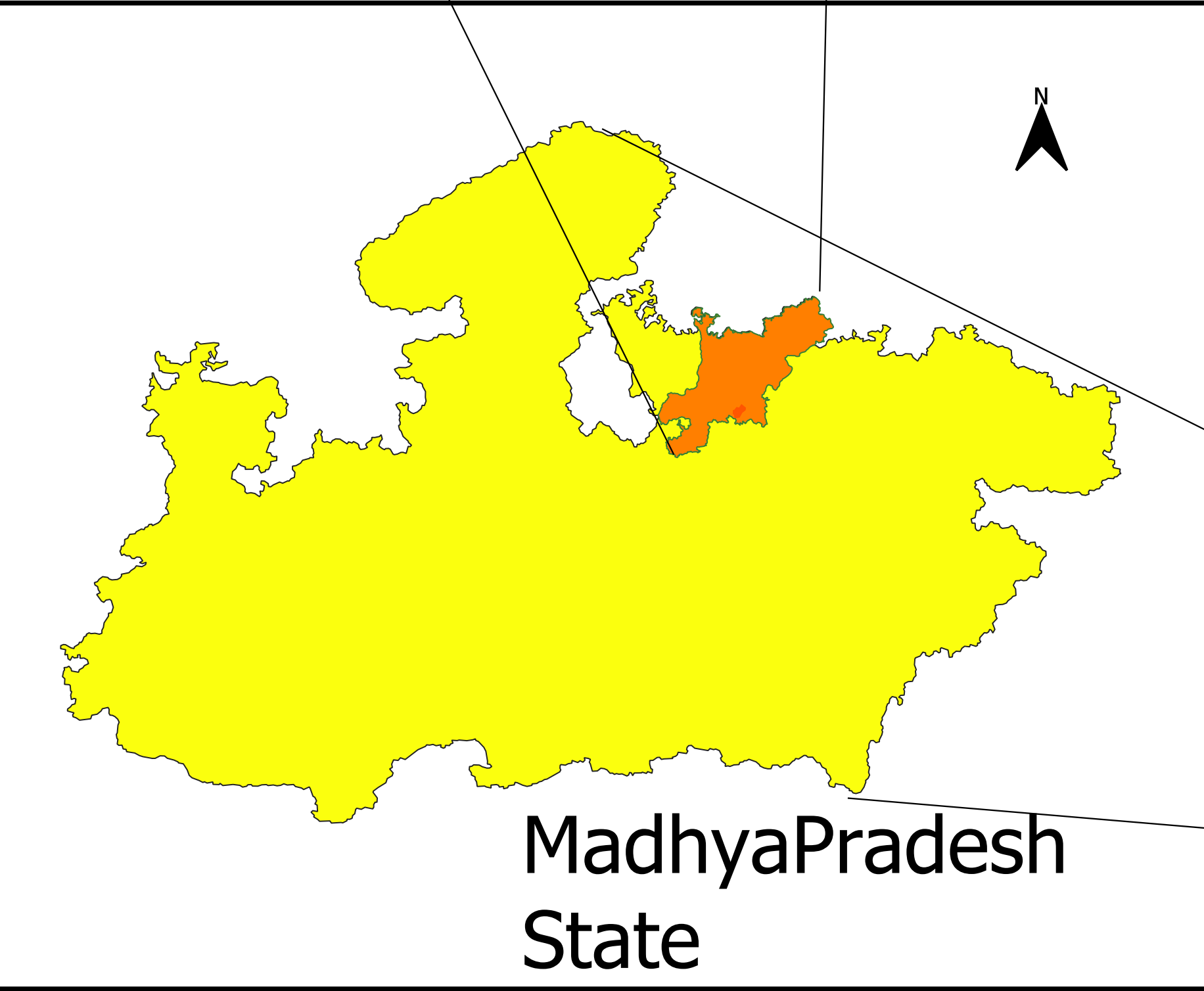
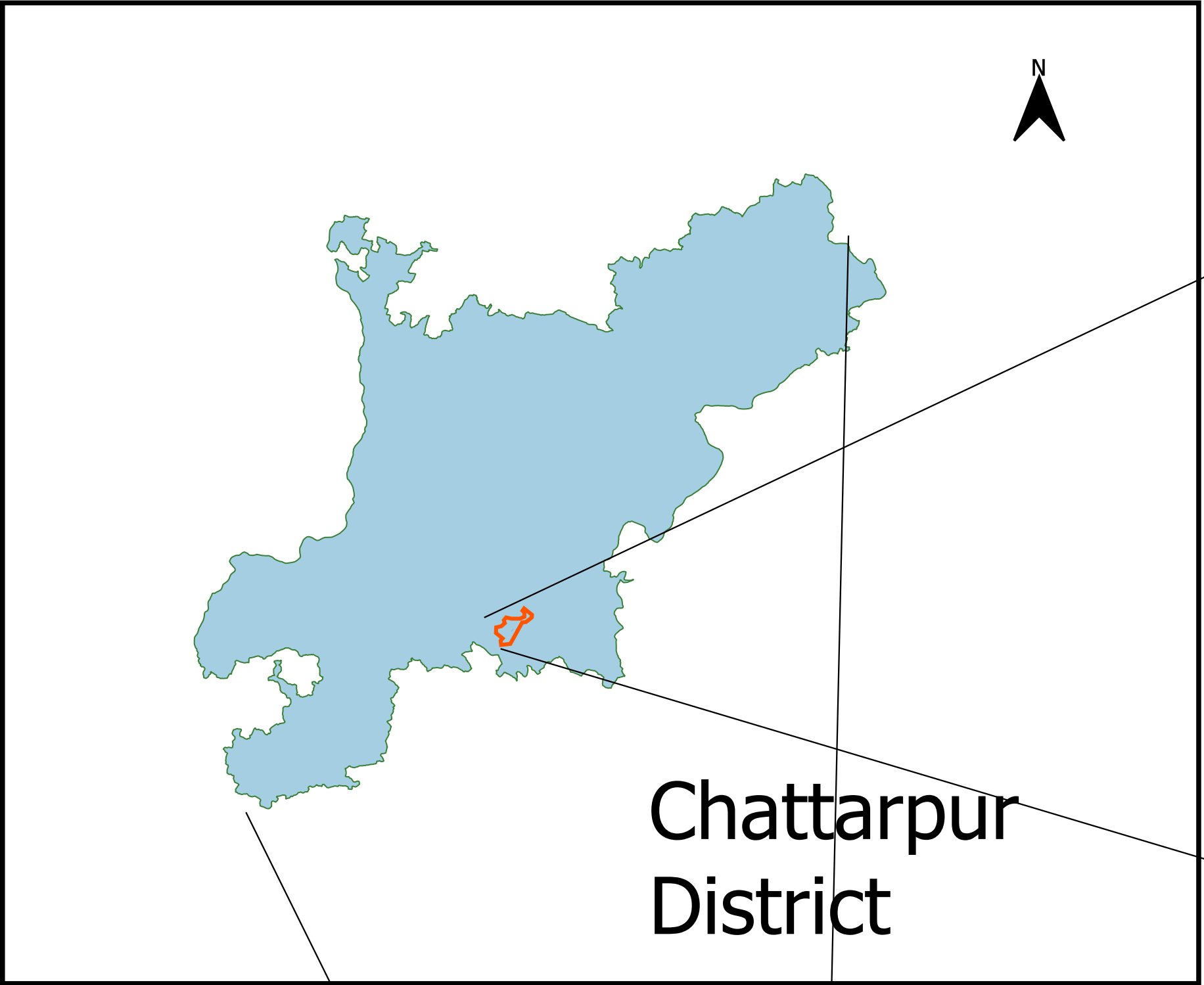



CARDINAL PONTS FOR THE BOUNDARY PILLAR		
BP	LATITUDE	LONGITUDE
BP-1	24° 29' 13.615 " N	79° 40" 43.000 " E
BP-2	24° 29' 47.911 " N	79° 41" 26.261 " E
BP-3	24° 30' 7.255 " N	79° 41" 27.874 " E
BP-4	24° 30" 55.249 " N	79° 40" 28.272 " E
BP-5	24° 30" 38.229 " N	79° 40" 16.605 " E
BP-6	24° 30" 24.359 " N	79° 40" 30.678 " E
BP-7	24° 29' 52.684 " N	79° 40" 30.382 " E
BP-8	24° 29' 38.307 " N	79° 39" 55.875 " E
BP-9	24° 29' 38.500 " N	79° 38" 52.194 " E
BP-10	24° 29' 47.502 " N	79° 38" 12.705 " E
BP-11	24° 29' 26.060 " N	79° 37" 55.731 " E
BP-12	24° 29' 5.053 " N	79° 38" 3.281 " E
BP-13	24° 28' 42.019 " N	79° 37" 37.552 " E
BP-14	24° 28" 32.848 " N	79° 36" 58.251 " E
BP-15	24° 27' 51.022 " N	79° 36" 56.301 " E
BP-16	24° 27' 9.727 " N	79° 37" 46.779 " E
BP-17	24° 26' 52.636 " N	79° 37" 31.794 " E
BP-18	24° 26' 20.834 " N	79° 37" 35.343 " E
BP-19	24° 26' 29.072 " N	79° 38" 44.804 " E
BP-20	24° 29' 9.843 " N	79° 40" 13.736 " E



	Madhya Pradesh State Mining Corporation Ltd
	Plate I- Location Map
GEOLOGICAL REPORT ON REGIONAL EXPLORATION (G-4) FOR LIMESTONE BANKI-SALAIYA BLOCK	
District: Chattarpur	State: Madhya Pradesh
R.F.:1:12500	
Prepared By: Sneha Bagdey	
Checked By/Approved By/ Processed at: MPSMPC Head Office, Bhopal	